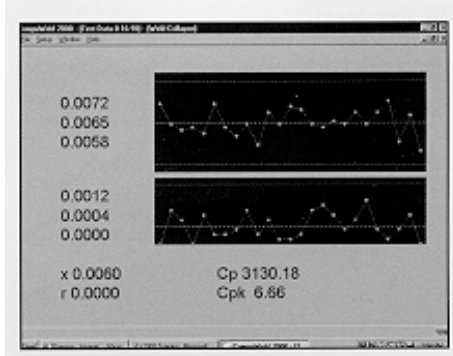




PAT CompuWeld[®] SPC Software

CompuWeld[®] 2000 SPC software and Viewer designed to enhance Branson 2000 Series and 900M/MA Systems for Data Acquisition, Storage, Real-time Statistical Process Control (SPC), and Remote Setup of Branson's 900 M/MA welding system.

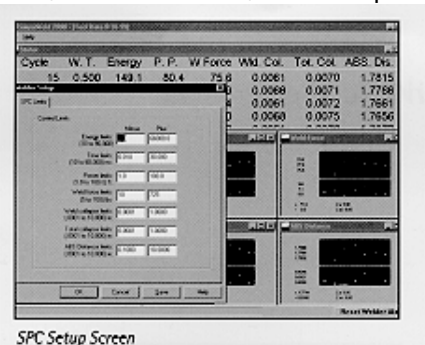
Welder Compatibility- use with Branson Ultrasonic Welders with External Communication Capability: 2000e, a, d, f; and 900M/MA Series power supplies, via ECI-1 External Communications Interface. The 900 M/MA Power Supplies require Version 11.XX or later MBOS; 900AES actuators require 11.XX or later ABOS, and the ECI-1 requires 11.XX or later EBOS.



SPC Raw Data and Calculated Values

Features:

- Displays weld data on monitor—eight view screens
- Displays Xbar and R Charts for Weld Time, Energy, Peak Power, Final Position, Weld Collapse, Total Collapse (9000 Series), Weld Force
- Provides Xbar, Xdoublebar, UCLX, LCLX, UCLR, LCLR, Rbar, Tolerance, Standard Deviation, CP, CPK statistical values for welder variables
- Red Alarm on monitor of welder and SPC errors
- Specific Alarm identification message
- Provides printout of Weld History, Alarms, Statistical Data and Graphs
- Data easily transported to MS Excel
- Uses Windows conventions, navigation, commands
- Viewer: Data History; Format Data for use as MS Excel comma delimited file; Sort, Filter, Math Functions, create reports



SPC Setup Screen

Viewing Data in CompuWeld Viewer

What's Included- CompuWeld[®] 2000 and Viewer CD, 1 hardware key, manual and cable.

CompuWeld[®] System Requirements Pentium Processor, Windows 95, 98, 2000, XP; 64 mb RAM min., 1 mb hard disk space for CompuWeld[®] 2000 and CompuWeld[®] Viewer

PLASTIC ASSEMBLY TECHNOLOGIES, INC.
 8445 Castlewood Drive, Suite A, Indianapolis, IN 46250
 T - (317) 841-1202 F - (317) 841-2717
www.patsonics.com